



Supercritical CO2 Parts Plans

**Infinity Turbine
LLC**

[TEL] +1-608-238-6001 (Chicago)

[Email] greg@infinityturbine.com

<https://www.infinityturbine.com/plans-for-supercritical-co2-extraction-systems-by-infinity.html>

Supercritical CO2 Parts Plans.



This webpage QR code

PDF Version of the webpage (maximum 10 pages)

Caster Beam

The infrastructure of all Infinity support and cart systems is the bolt-together Caster Beam.
We first started welding carts and quickly found out that by having a bolt together laser cut powder coated beam system was the best method for production and developments.



Vacuum Bagging Cart

Vacuum bag lumber and timbers to remove moisture content.

Vacuum Bagging Cart

Vacuum bag lumber and timbers to remove moisture content.



Copyright 6/30/202 Infinity Turbine LLC

Spinning Disc Reactor Blocks

Experimenting with development of hydrodynamic cavitation may be accelerated with using modular blocks which allow development to commercial product faster to deploy. Blocks may be machined from HDPE since the water is not pressurized. Production versions may be made from Aluminum or Stainless Steel. We built a experimental cart using modular blocks for our hydrodynamic cavitation experiments and product development. Plans are available for sale.



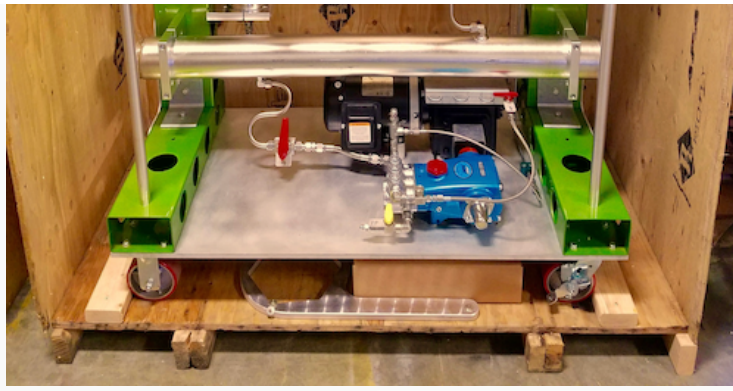


Copyright 6/30/202 Infinity Turbine LLC

Kit Plans 10L Supercritical CO2 System for Beer Hops Extraction

Kit plans for our successful 10L extraction system.
May be scaled down or scaled up.

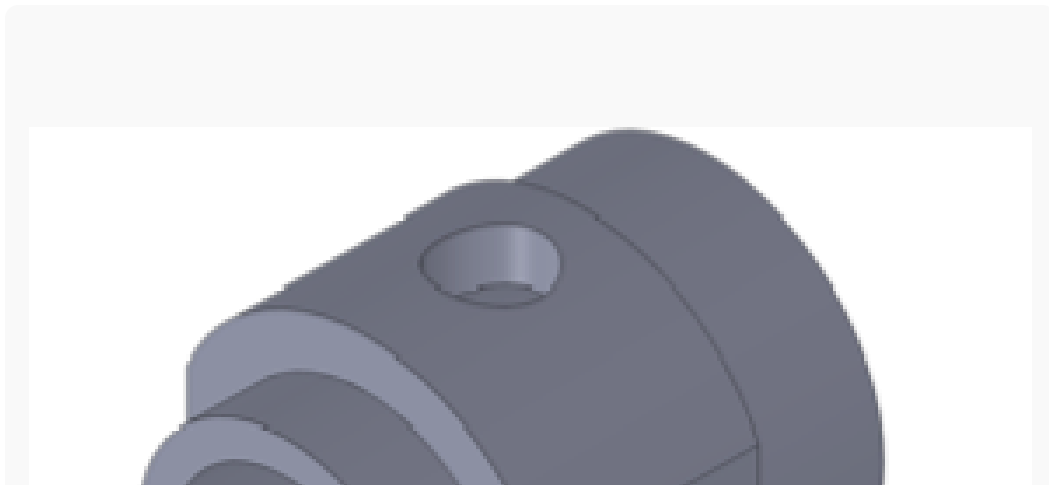




Copyright 6/30/202 Infinity Turbine LLC

Kit Plans for Cat 310 CO2 Valve to Convert to a CO2 Pump

Plans to machine a CO2 valve to replace conventional valves in Cat310 pump for CO2 liquid pumping.

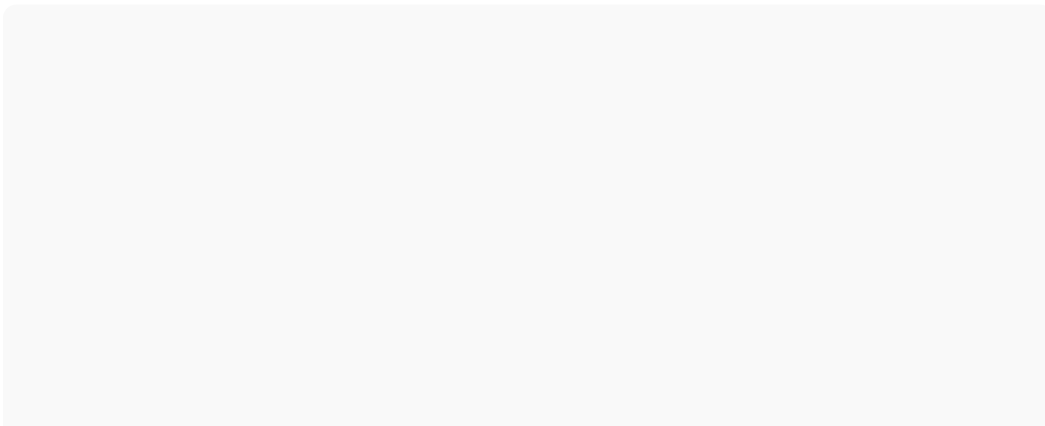




Copyright 6/30/202 Infinity Turbine LLC

Kit Plans CO2 Reservoir

ASME CO2 liquid tank.



Copyright 6/30/2022 Infinity Turbine LLC

Kit Plans CO2 Extraction Vessel 10L Size for Beer Hops and Supercritical CO2 Systems

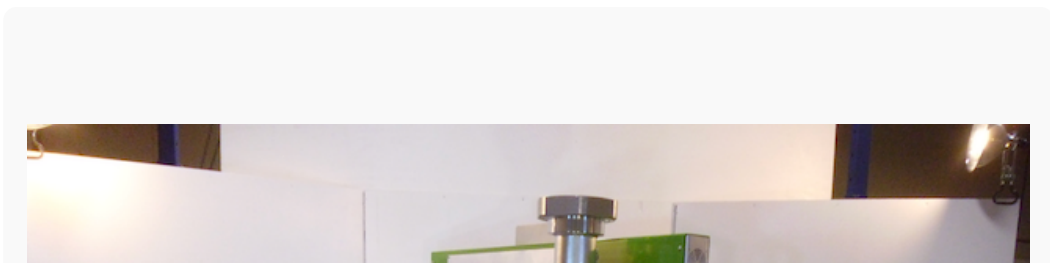
ASME CO2 Extraction Vessel plans.



Copyright 6/30/202 Infinity Turbine LLC

Kit Plans Large Wrench for Extraction Vessel Nut

Wrench plans.

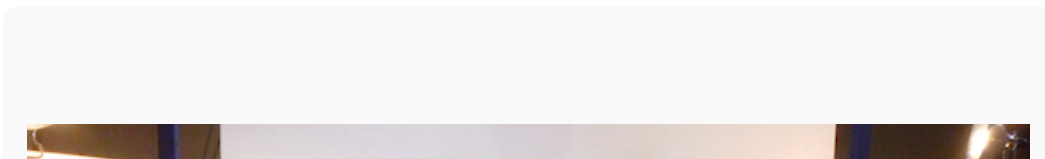




Copyright 6/30/202 Infinity Turbine LLC

Kit Plans Flow Bar

Flow bar plans. The flow bar allows even distribution of CO₂ through length of extraction vessel so you don't have to reverse flow.



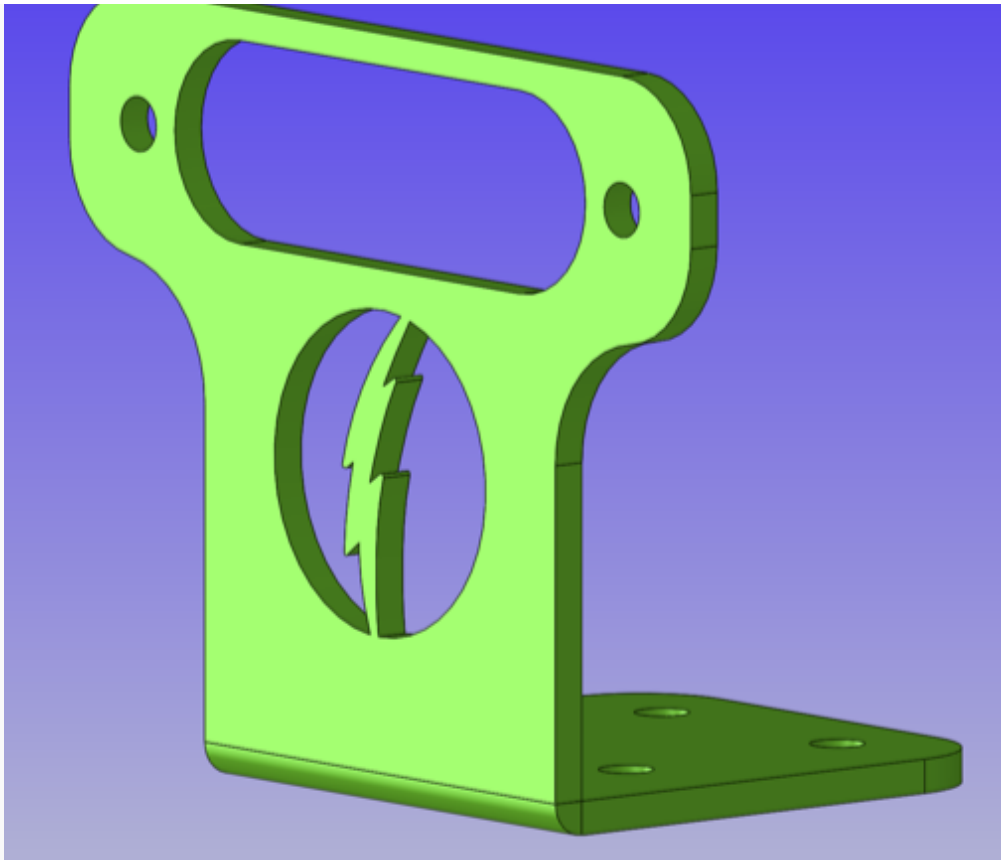


Copyright 6/30/202 Infinity Turbine LLC

Kit Plans Cat310 Pump Vise

Cat310 Pump Vise plans. Holds the Cat310 pump assembly to allow pump modification and routine maintenance of seal replacement.





Copyright 6/30/202 Infinity Turbine LLC